

GET STARTED USING PLANET FOSS!

To get started, go to www.fossweb.com/planetfoss

You can also access Planet FOSS from each of the FOSS Middle School course pages on FOSSweb. Click on the Planet FOSS button in the sidebar on the left-hand side of the FOSS course page.



CHOOSING A PHOTO CHALLENGE

From the Planet FOSS homepage, select your course from the navigation at the top of the page. This will bring you to the course photo challenges page.

First, pick your challenge! The challenges appear on the right side of the page. Read through the challenges on this page to find one that interests you. Photo challenges are themes for your pictures that correlate with the FOSS investigations.

Next, go out and take pictures!

DOWNLOADING PHOTOS

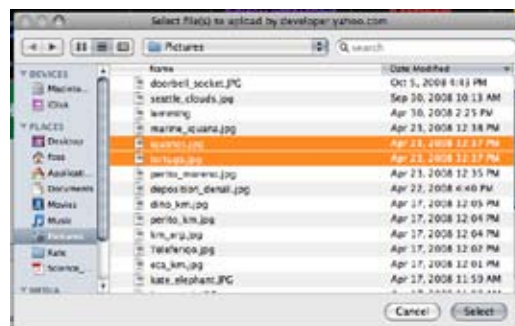
If you've never downloaded pictures from your camera to the computer, consult your camera's manual or ask your parent or teacher for help. For most digital cameras, you'll need a USB cord to connect your camera to your computer.



UPLOADING PHOTOS

Once you've saved your photos on your computer, go back to your Planet FOSS Photo Challenge page and click the "Share Photos" button.

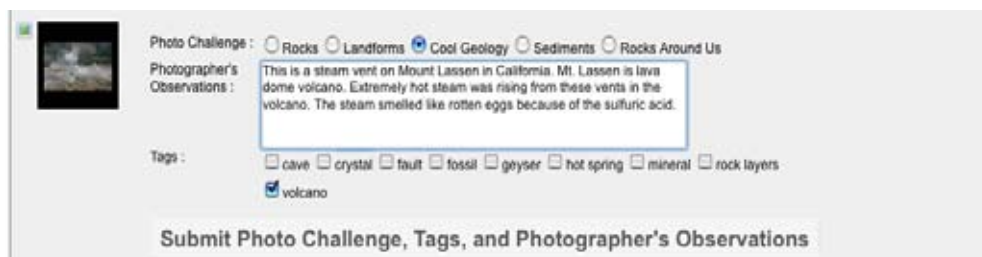
On the upload page click the "Find Pictures" button. A pop-up window will appear that allows you to browse through the files on your computer to find the photo(s) you want to upload. You can control-click on multiple photos in this dialog box to upload multiple images. Click the "Select" button once you have chosen your photos.



Next, click the "Upload Photos" button. Note: you cannot upload photos larger than 4 MB.

DESCRIBING YOUR PHOTO

Once the photo(s) have uploaded, click the "Add photo Challenge, Tags, and Photographer's observations" button



Under "Photo Challenge," choose the button that corresponds the challenge your photo represents. Inside the Photographer's Observations box, write a description of your photo. Then, choose the tags that best describe your photo. Once you're done, click the "Submit Photo Challenge, Tags, and Photographer's Observations" button.

You can label your photograph by choosing a username. Do not use your real name! Instead, use a nickname or your initials. For example, if your real name is Jane Doe, you can use jd45 as your ID.

Next, enter the zip code of the location where you took the photograph. If you do not know the zip code of your photo's location, use the zip code lookup link.

Be sure to check the box that verifies that your images are original and that you have a parent or guardian's permission digitally display your photographs on the Planet FOSS website.

Finally, click the "Submit" button. Your photos will be reviewed by the Planet FOSS team. As long as the photos have no human faces and relate to the photo challenge, they should be approved! Check back in 24-36 hours to see your photos.

VIEWING PHOTOS

To view your photos or photos taken by other students across the country, navigate to the Planet FOSS homepage, and then choose the course you'd like to view photos for. From the Photo Challenge page, click the "View Photos" button.



There are three different ways you can view photos: by date (most recent uploaded first), by area (through a map interface), and by tag (through a tag cloud).

Viewing By Date

The default view is "By Date." For each course, you can view all the photos uploaded, with the most recent photos displayed first in the thumbnail strip at the bottom of the screen. You can browse through the photos by clicking on the "Next" arrow on the bottom right. Click on a photo to view a larger version and the photographer's observation.



Viewing By Area

Click the "Area" tab on the top of the view panel to see a map of the US. You will see flags in all the locations where photos have been taken. Click on a flag to see images from that zip code. Once you click on a flag, images from the location will appear as thumbnails as the bottom of the screen. Click on a photo to view a larger version and the photographer's observation.

Viewing By Tag

Click the “Tag” tab on the top of the view panel to see a tag cloud. A tag that appears larger will have more photos labeled with the tag. Tags are similar to keywords and can help you find a subset of images. Once you click on a tag, the images with that tag will appear as thumbnails as the bottom of the screen. Click on a photo to view a larger version and the photographer’s observation.

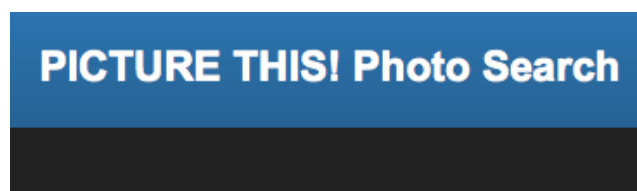
SEARCHING FOR PHOTOS



You can use the “Search” button, to search photos using a keyword(s). The Search page allows you to search photos in all the courses in Planet FOSS. The search button is represented by a magnifying glass at the top right of the browse panel.

Type in the keyword or words you would like to search for. If you want results with all terms included, check the “require all terms” box. If you only want photos from a particular challenge, click the “choose challenges” link and check all the challenges you want to search for. You can also leave these blank if you would like to search all the courses.

You can also choose a date range to narrow your results. For example, to search for all photos uploaded during the month of May, click the calendar icon next to the text “oldest” and choose May 1, then click the calendar icon next to the text “newest” and choose May 31. Once you’ve chosen your parameters, click “Submit Query.”



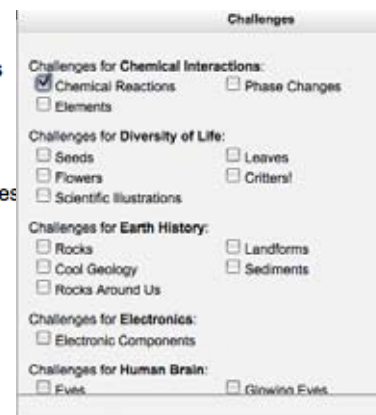
Keyword(s): (require all terms)

Challenge(s): Chemical Reactions, [Click to choose challenges](#)

Course:

- Chemical Interactions
- Diversity of Life
- Earth History
- Electronics
- Human Brain
- Planetary Science
- Populations and Ecosystems
- Force and Motion
- Weather and Water

Date Range: (oldest) - (newest)



HAVE FUN EXPLORING PLANET FOSS!